

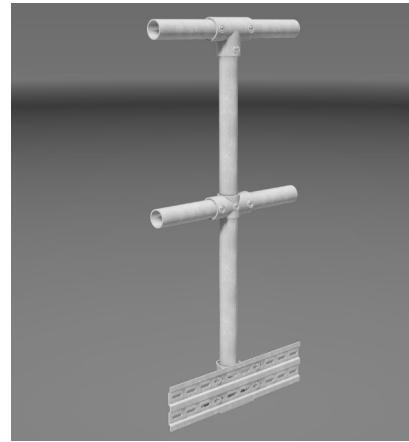
TR25S Tuffrail[®] Stainless Steel

Industrial Handrail Specifications

Top & Midrail / Toeboard

Featuring Tuffgard[®] Toeboard

For level or rake applications



Key features

- › Modular flexibility
- › No-weld assembly
- › Superior corrosion protection
- › Flat pack delivery
- › Colour options available
- › Available ex-stock
- › BIM & CAD Support

Applications suited to

- › Water treatment facilities
 - › Harsh coastal environments
 - › Jetties and boardwalks
 - › Service platforms and mezzanines
 - › Warehouses and loading bays
 - › Retaining walls and culverts
 - › Roof service areas and fall edges
- Refer to applicable NZ Standards and Building Codes

Specification Summary

Supply and install the proprietary TR25S handrail system to substrate according to Moddex specifications, or by a Moddex accredited installer.

Technical Data

Material

Stanchions & rails	316 Stainless Steel
Clamp fittings	Cast 316 Stainless Steel
Clamp locking screws	Stainless Steel (304)
Toeboard type MD615	316 Stainless Steel

Protective coating

Optional	Powder coating and paint specs*
-----------------	---------------------------------

*The standard process for Powder Coated and Painted handrail products is as follows: black steel is used for fabrication. The steel is sand blasted and a zinc primer coating is applied. The powder coat / paint coat is then applied over the zinc primer creating a dual shield coating with a decorative finish.

Dimensions

Variable depending on building/application/ code

Stanchions

Diameter	48.3mm OD
Nominal Thickness	2.77 - 3.68 mm (loading dependent)

Rails

Diameter	48.3mm OD
Nominal Thickness	2.77mm

Toeboard

Height	120mm
Thickness	9mm wide profile

Clamp fittings

Thickness	5.0mm (approx)
Locking screws	M12 x 1.75 x 11mm - DEXX [®] Drive

Weight

Variable depending on building/application/ code

Stanchion with clamps	6.7 to 7.7kg
Rail per metre	3.11kg
Toeboard per metre	2.80kg

Fixings

Stanchion attachment to

Concrete	M12, 316 stainless chemical anchor
Structural steel	M16 stainless high tensile bolt set
Timber	Stainless or galv coach screws

Compliance

handrails are designed and manufactured in accordance with New Zealand Standard NZS 1657 and relevant statutory WHS Codes of Practice/Guidelines.

Testing

Testing and performance based on requirement of Standard AS/NZS 1170.1 Clause 3.6 Table 3.3. Static load testing has been performed and independent testing has been carried out to confirm the suitability of the Moddex system in maritime conditions.

Warranty

5 years from date of purchase subject to correct installation, use and maintenance in accordance with manufacturer's specifications and recommendations, unless otherwise negotiated at the time of purchase.

Inspection & Maintenance

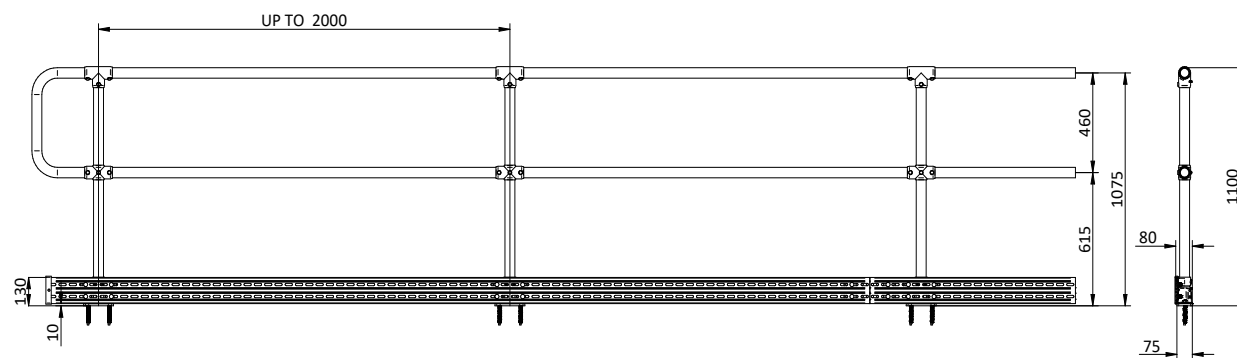
Visual inspection for any damage or loose fixings must be done periodically and prior to use. No certified maintenance required. Basic wear and tear preventative maintenance is recommended, as per manufacturer's specifications and recommendations.

Basis of Design

When designed as per the Moddex PS1

1. Design Life: 50 years minimum
2. Building Occupancy: B, E
3. Loadings: AS/NZS 1170.1:2002 - Table 3.3 AS 1657:2013 - CL6.1
4. Live Loadings: Line: 0.35kN/m Concentrated: 0.6 kN

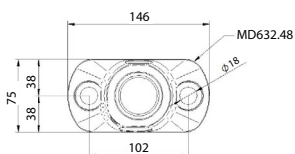
Technical Information



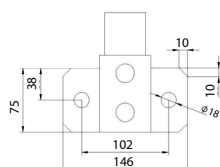
Mount Dimensions

FIXING TO CONCRETE

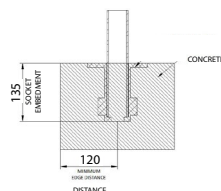
T2 - Top Mount (2 Fixings)



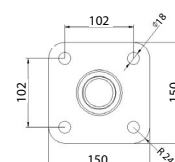
F2 - Face Mount (2 Fixings)



CD - Cored Mount

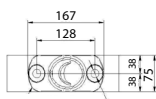
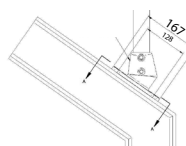


T4 - Top Mount (4 Fixings)

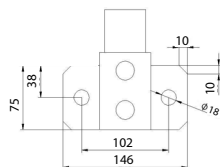


FIXING TO STEEL

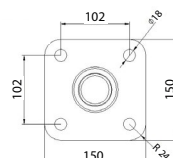
T2 - Top Mount (2 Fixings)



F2 - Face Mount (2 Fixings)

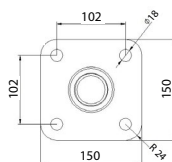


T4 - Top Mount (4 Fixings)

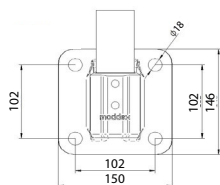


FIXING TO TIMBER

T4 - Top Mount (4 Fixings)



F4 - Face Mount (4 Fixings)



Standard References

New Zealand Standard NZS 1657:1992

3.2 Protection at sides, ends, openings and edges

4.5 Guardrailing

4.6 Handrailing

Important Note: Failure to supply and/or install proprietary product in accordance with above Standards and codes and the Moddex PS1, voids complete system certification and/or warranty.

Designed and manufactured by Moddex. ©Moddex Group. All Rights Reserved.

For information or technical support please contact us

1800 663 339 (AU)

0800 663 339 (NZ)

moddex.com

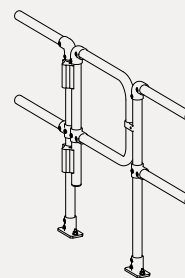
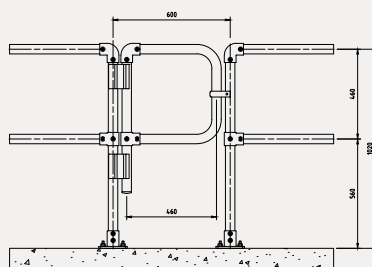
Technical Drawing MD582.0600 – Self Closing Gate

MD582.0600

Post Spacing 600mm

Length 460mm

Height 460mm



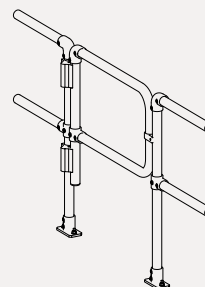
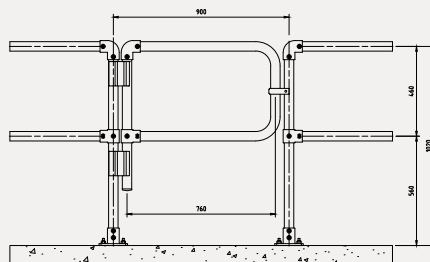
Technical Drawing MD582.0900 – Self Closing Gate

MD582.0900

Post Spacing 900mm

Length 760mm

Height 460mm



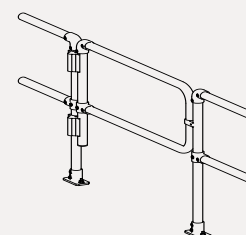
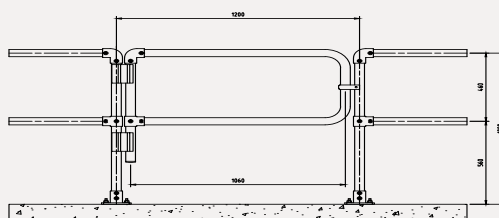
Technical Drawing MD582.1200 – Self Closing Gate

MD582.1200

Post Spacing 1200mm

Length 1060mm

Height 460mm



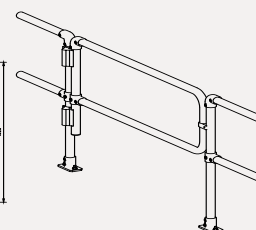
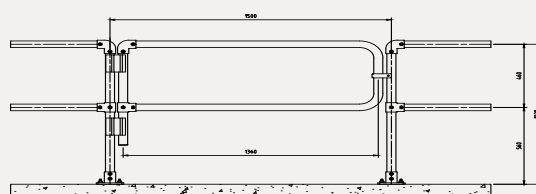
Technical Drawing MD582.1500 – Self Closing Gate

MD582.1500

Post Spacing 1500mm

Length 1360mm

Height 460mm



Technical Drawing – 900mm Custom Gate with Toeboard

MD582.0900 Custom

Post Spacing 900mm

Length 760mm

Height 1034mm

